

DISPLAY CASES

Combo

MILLROCK



DISPLAY CASES Combo



Two Cases In One

The MILLROCK Combo™ is our most popular Café display case. The COMBO features a split interior for refrigerated product (sandwiches, salads, desserts & juices) and ambient offerings (cookies, muffins, scones & biscotti). The oversized commercial refrigeration system, engineered with quiet low velocity fans, easily maintains 38° on the cold side. The glass sides and center divider allow unobstructed shopping from any angle, while maintaining room temperature on the ambient side.

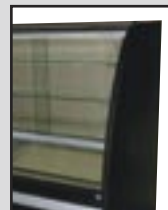
The fit and finish of the MILLROCK COMBO is spectacular! Frameless curved, non-glare glass, mirrored interior and individual lighting on every shelf provide outstanding product presentation. The oneway vision mirror on the doors allows your operator to clearly view all products and easily assist customers. Our standard options include four sizes, full-mirror or full-glass sides, and choice of any laminate or wood finish.

MILLROCK Display Cases

Deliver unparalleled merchandising • Match your interior design • Enhance your store image • Boost impulse buying & rapid transactions

Side Panel Options

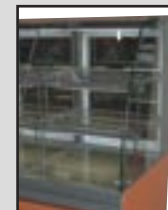
Full Side



Half Glass



Full Glass



FEATURES

- ◆ **Half-Refrigerated** - Ambient left side & refrigerated right side from customer's view
- ◆ **Curved Front Glass** - Unobstructed product view, Ez-Open™ bottom hinge
- ◆ **Lights For Every Shelf** - 6 Slim-line fluorescent fixtures illuminate all products, no shadows & great visibility, light shield & impact sleeve included
- ◆ **Mirrored & Glass Side Walls** - Mirrored to 35", unobstructed glass above counter height for optimal product visibility from any vantage point.
- ◆ **Any Exterior Finish** - Select any standard color, pattern or wood grain plastic laminate
- ◆ **Mirrored Rear Doors** - Energy efficient argon insulated double pane glass, one-way mirrored, bypass sliding, easy close & lift out
- ◆ **Glass Shelves** - (2) Tiers, (4) 3/8" tempered glass shelves
- ◆ **Durable Top** - Stainless steel work/display deck
- ◆ **Bottom Shelf** - Stainless steel for unmatched durability. Ambient is white laminate for brilliant display
- ◆ **Easy to Clean** - Ez-Open™ Tilting front glass, removable side glass & rear doors
- ◆ **Glass Defogger** - Continuous air over the curved glass exterior via stainless steel plenum
- ◆ **Plug & 8' Cord Included** - 110v. Plug in and start selling!
- ◆ **Meets All Electrical & Sanitation Requirements for USA & Canada** including CSA, ETL, NSF, UL, & CRMA. Certified by CSA & ETL.
- ◆ **Superior Warranty** - 1 year parts and labor / 5 years compressor.

Models

C38

C50

C62

C74

405 West Street ■ West Bridgewater, MA 02379 ■ p:800.645.7625 ■ f:617.687.7700
 e:sales@millrock.com ■ www.millrock.com ■ www.GrowYourBrand.com

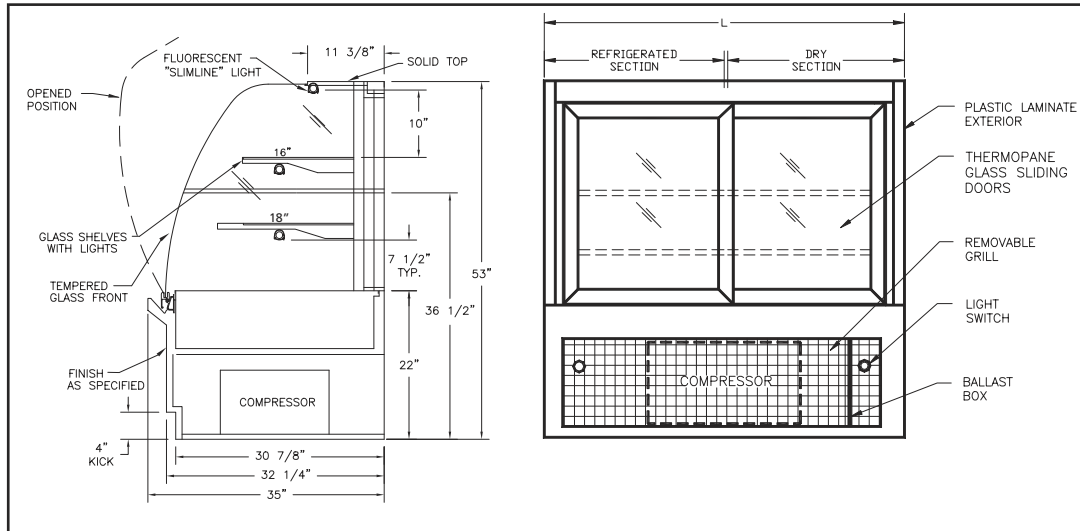
© 2000 - 2005 Modular Brand Group, LLC All Rights Reserved. Millrock is a division of Modular Brand Group, LLC

Continual product improvement may necessitate changes in specifications without notice

Rev.082105

DISPLAY CASES

Combo



OPTIONS

- ◆ **Custom Finishes** - We welcome the opportunity to match designer finishes with any stone, hardwood, & metal for the front, top or sides of your MILLROCK.
- ◆ **Stone** - Granite top & interior floor
- ◆ **FREE Energy Efficient Model** - Sealed Argon insulated double pane front glass with mirrored insulated partition
- ◆ **FREE Side panel option** - Solid with mirrored interior or Glass full height ends
- ◆ **Security Kit** - Locking rear doors & front glass
- ◆ **Casters** - Easy cleaning, semi-mobile placement, and delivery. Only available at time of order. Add 1/2" to height.
- ◆ **FREE Slim-Sides** - 3/4" thick end panel (reduces overall length by 1 1/2")
- ◆ **Product ID Kit** - Sign holders, (4) Clear full shelf 1 1/4" H. ticket strips & (6) floor easel clips
- ◆ **Extra Shelf** - Upgrade to 4 tiers of display! (2) Glass shelves with lighting
- ◆ **FREE Shelving Option** - Wire or Stainless steel
- ◆ **FREE Partition Location** - Choose the amount of refrigerated vs. ambient display (center is standard)
- ◆ **Hardware Colors** - Powder-coated front hinge, shelf supports & lighting valance
- ◆ **Custom Sizes** - Available in custom depth and height
- ◆ **Remote Refrigeration** - Excludes refrigeration system
- ◆ **Free Refrigeration Location** - Locate the refrigeration on the Left or Right for best Queue

TECH SPECS

- ◆ **Laboratory Tested** - Every MILLROCK undergoes a 24 hour endurance test with 181 point quality control inspection before shipment
- ◆ **Operating Temp.** Refrigerated side is factory calibrated to 38° F.
- ◆ **8' long cord** with plug
- ◆ **Millrock Cases** are designed to operate under normal store conditions less than 75° F (24° C) with less than 50% Relative Humidity
- ◆ **Hot gas evaporator pan**
- ◆ **Refrigerant** is environmentally friendly R22
- ◆ **Meets All Electrical & Sanitation Requirements** for USA & Canada including CSA, ETL, NSF, UL, & CRMA. Certified by ETL.
- ◆ **Warranty** - 1 year parts and labor / 5 years compressor

MODEL	DIMENSIONS (INCHES) length - depth - height	ELECTRICAL volts/phase/hertz - amps.	COMPRESSOR (hp)	SHIPPING WEIGHT / VOLUME lbs. / cu. ft.
C38	38 - 35 - 53	120/1/60 - 9.9	1/3	270 / 55.0
C50	50 - 35 - 53	120/1/60 - 9.9	1/3	310 / 68.7
C62	62 - 35 - 53	120/1/60 - 10.2	1/3	385 / 83.7
C74	74 - 35 - 53	120/1/60 - 10.2	1/3	455 / 102.5

405 West Street ■ West Bridgewater, MA 02379 ■ p:800.645.7625 ■ f:617.687.7700
e:sales@millrock.com ■ www.millrock.com ■ www.GrowYourBrand.com

© 2000 - 2005 Modular Brand Group, LLC All Rights Reserved. Millrock is a division of Modular Brand Group, LLC

Continual product improvement may necessitate changes in specifications without notice

Rev.082105