

DISPLAY CASES

Refrigerated Counter

MILLROCK



FEATURES

- ◆ **Curved Front Glass** - Unobstructed product view, Ez-Open™ bottom hinge
- ◆ **Lights For Every Shelf** - 3 Slim-line fluorescent fixtures illuminate all products, no shadows & great visibility, light shield & impact sleeve included
- ◆ **Mirrored Rear Doors** - Energy efficient argon insulated double pane glass, one-way mirrored, bypass sliding, easy close & lift out (24" model is (1) hinged door)
- ◆ **Wire Shelves** - (2) tiers of white epoxy coated shelving
- ◆ **Durable Top** - Stainless steel work/display deck
- ◆ **Bottom Shelf** - Stainless steel for unmatched durability.
- ◆ **Easy to Clean** - Ez-Open™ Tilting front glass, removable side glass & rear doors
- ◆ **Plug & 8' Cord Included** - 110v. Plug in and start selling!
- ◆ **Meets All Electrical & Sanitation Requirements for USA & Canada** including CSA, ETL, NSF, UL, & CRMA. Certified by CSA & ETL.
- ◆ **Superior Warranty** - 1 year parts and labor / 5 years compressor.

Models

R24C

R37C

R48C

Sales Drop-in Your Counter...

Retrofit your existing countertop TODAY with the MILLROCK™ Refrigerated Counter. Serve your customers refrigerated pastries, sandwiches, salads, and premium beverages with unmatched brilliance. The oversized commercial refrigeration system sits below your counter, engineered with quiet low velocity fans, easily maintains 38°. The glass sides allow unobstructed shopping from every angle. All the lunch and refrigerated pastry sales without a remodel or construction.

The fit and finish of the MILLROCK Refrigerated Display Case is spectacular! Frameless curved, nonglare glass and individual lighting on every shelf provide outstanding product presentation. The double pane glass doors allow your operator to clearly view all products and easily assist customers.

MILLROCK Display Cases

Deliver unparalleled merchandising • Match your interior design • Enhance your store image • Boost impulse buying & rapid transactions

Below Counter View



DISPLAY CASES Refrigerated Counter

Please note this Counter model requires customer modification of existing counter and cabinet. Consult with Millrock customer service for assistance with your particular application. Installation by a professional contractor highly recommended.

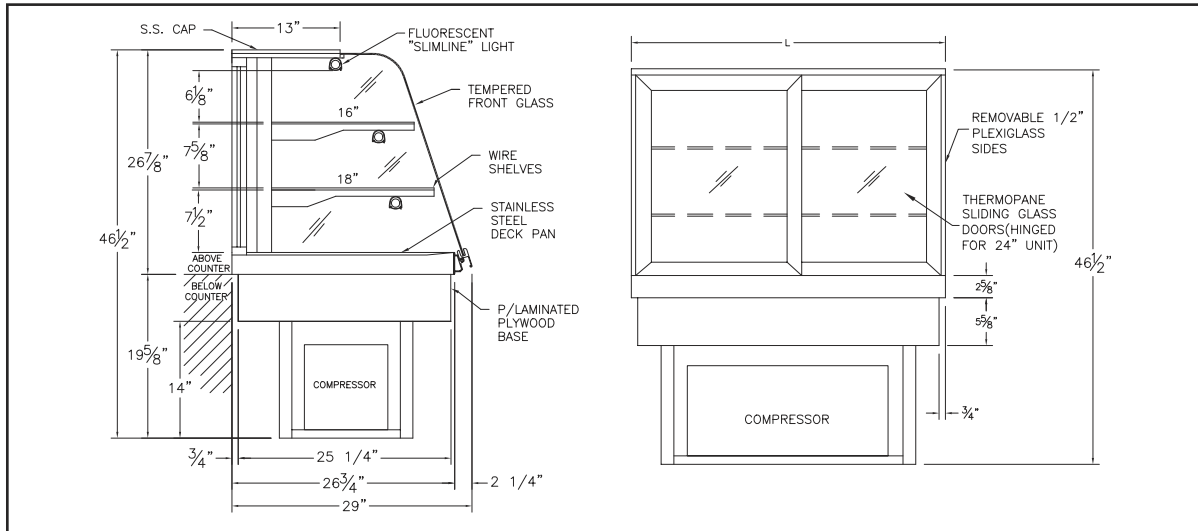
405 West Street ■ West Bridgewater, MA 02379 ■ p:800.645.7625 ■ f:617.687.7700
e:sales@millrock.com ■ www.millrock.com ■ www.GrowYourBrand.com

© 2000 - 2005 Modular Brand Group, LLC All Rights Reserved. Millrock is a division of Modular Brand Group, LLC
Continual product improvement may necessitate changes in specifications without notice

Rev.082105

DISPLAY CASES

Refrigerated Counter



OPTIONS

- ◆ **Custom Finishes** - We welcome the opportunity to match designer finishes with any stone, hardwood, & metal for the front, top or sides of your MILLROCK.
- ◆ **Stone** - Granite top & interior floor
- ◆ **Security Kit** - Locking rear doors & front glass
- ◆ **Product ID Kit** - Sign holders, (2) Clear full shelf 1 1/4" H. ticket strips & (3) floor easel clips
- ◆ **Shelving Option** - Stainless Steel or tempered glass shelves
- ◆ **Hardware Colors** - Powder-coated front hinge, shelf supports & lighting valance
- ◆ **Custom Sizes** - Available in custom depth and height
- ◆ **Remote Refrigeration** - Excludes refrigeration system

TECH SPECS

- ◆ Laboratory Tested - Every MILLROCK undergoes a 24 hour endurance test with 181 point quality control inspection before shipment
- ◆ Operating Temp. Refrigeration is factory calibrated to 38° F.
- ◆ 8' long cord with plug
- ◆ Millrock™ Cases are designed to operate under normal store conditions less than 75° F (24° C) with less than 50% Relative Humidity
- ◆ Hot gas evaporator pan
- ◆ Refrigerant is environmentally friendly R22
- ◆ Meets All Electrical & Sanitation Requirements for USA & Canada including CSA, ETL, NSF, UL, & CRMA. Certified by ETL.
- ◆ Warranty - 1 year parts and labor / 5 years compressor.
- ◆ Customer must provide adequate air circulation for the under counter self contained refrigeration system

Please note this Counter model requires customer modification of existing counter and cabinet. Consult with Millrock customer service for assistance with your particular application. Installation by a professional contractor highly recommended.

Cutout dimensions:

R24C - 22 3/4" x 25 1/2"

R37C - 35 3/4" x 25 1/2"

R48C - 46 3/4" x 25 1/2"

MODEL	DIMENSIONS (INCHES) length - depth - height	ELECTRICAL volts/phase/hertz - amps.	COMPRESSOR (hp)	SHIPPING WEIGHT / VOLUME lbs. / cu. ft.
R24C	24 - 29 - 46 1/2	120/1/60 - 7.7	1/5	245 / 30.0
R37C	37 - 29 - 46 1/2	120/1/60 - 10.2	1/4	290 / 46.0
R48C	48 - 29 - 46 1/2	120/1/60 - 10.2	1/4	385 / 60.0

405 West Street ■ West Bridgewater, MA 02379 ■ p:800.645.7625 ■ f:617.687.7700
e:sales@millrock.com ■ www.millrock.com ■ www.GrowYourBrand.com

© 2000 - 2005 Modular Brand Group, LLC All Rights Reserved. Millrock is a division of Modular Brand Group, LLC

Continual product improvement may necessitate changes in specifications without notice

Rev.082105