

# DISPLAY CASES

## Refrigerated

# MILLROCK



DISPLAY CASES Refrigerated



## Refrigerated Elegance

The MILLROCK™ Refrigerated Display Case showcases your refrigerated pastries, sandwiches, salads, and premium beverages with unmatched brilliance. The oversized commercial refrigeration system, engineered with quiet low velocity fans, easily maintains 38°. The glass sides allow unobstructed shopping from every angle.

The fit and finish of the MILLROCK Refrigerated Display Case is spectacular! Frameless curved, non-glare glass, mirrored interior and individual lighting on every shelf provide outstanding product presentation. The one-way vision mirror on the doors allows your operator to clearly view all products and easily assist customers. Our standard options include four sizes, full-mirror or full-glass sides, and choice of any laminate or wood finish.

### MILLROCK Display Cases

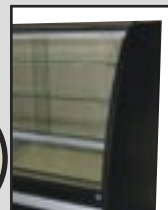
Deliver unparalleled merchandising • Match your interior design • Enhance your store image • Boost impulse buying & rapid transactions

## FEATURES

- ◆ **Curved Front Glass** - Unobstructed product view, Ez-Open™ bottom hinge
- ◆ **Lights For Every Shelf** - 3 Slim-line fluorescent fixtures illuminate all products, no shadows & great visibility, light shield & impact sleeve included
- ◆ **Mirrored & Glass Side Walls** - Mirrored to 35", unobstructed glass above counter height for optimal product visibility from any vantage point.
- ◆ **Any Exterior Finish** - select any standard color, pattern or wood grain plastic laminate
- ◆ **Mirrored Rear Doors** - Energy efficient argon insulated double pane glass, one-way mirrored, bypass sliding, easy close & lift out
- ◆ **Glass Shelves** - (2) Tiers, (4) 3/8" tempered glass shelves
- ◆ **Durable Top** - Stainless steel work/display deck
- ◆ **Bottom Shelf** - Stainless steel for unmatched durability.
- ◆ **Easy to Clean** - Ez-Open™ Tilting front glass, removable side glass & rear doors
- ◆ **Glass Defogger** - Continuous air over the curved glass exterior via stainless steel plenum
- ◆ **Plug & 8' Cord Included** - 110v. Plug in and start selling!
- ◆ **Meets All Electrical & Sanitation Requirements for USA & Canada** including CSA, ETL, NSF, UL, & CRMA. Certified by CSA & ETL.
- ◆ **Superior Warranty** - 1 year parts and labor / 5 years compressor.

### Side Panel Options

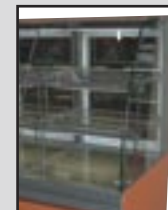
Full Side



Half Glass



Full Glass



### Models

R38

R50

R62

R74

R96

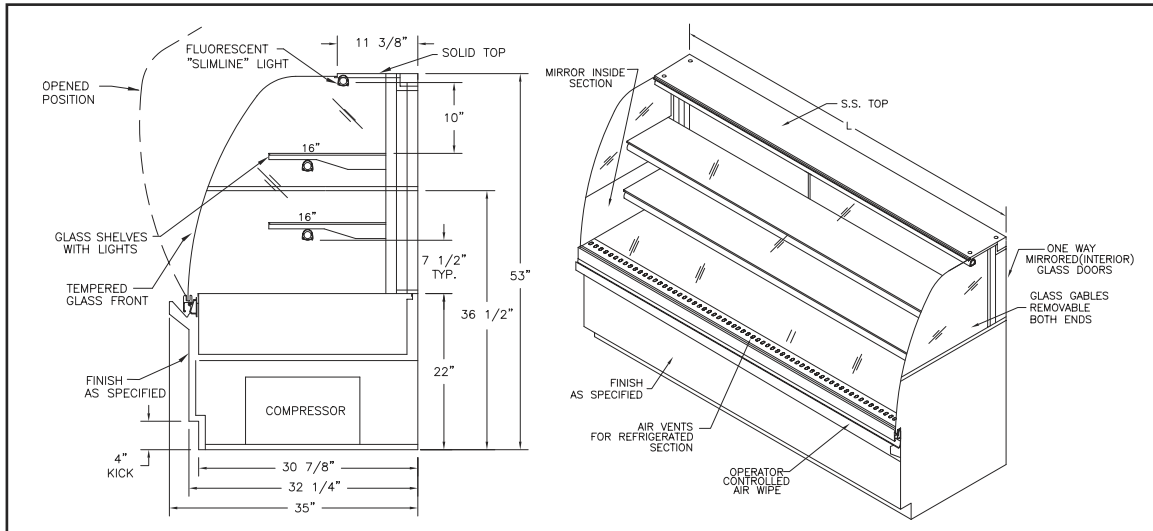
405 West Street ■ West Bridgewater, MA 02379 ■ p:800.645.7625 ■ f:617.687.7700  
 e:sales@millrock.com ■ www.millrock.com ■ www.GrowYourBrand.com

© 2000 - 2005 Modular Brand Group, LLC All Rights Reserved. Millrock is a division of Modular Brand Group, LLC  
 Continual product improvement may necessitate changes in specifications without notice

Rev.082105

# DISPLAY CASES

## Refrigerated



### OPTIONS

- ◆ **Custom Finishes** – We welcome the opportunity to match designer finishes with any stone, hardwood, & metal for the front, top or sides of your MILLROCK.
- ◆ **Stone** - Granite top & interior floor
- ◆ **FREE Energy Efficient Model** – Sealed Argon insulated double pane front glass with mirrored insulated partition
- ◆ **FREE Side panel option** - Solid with mirrored interior or Glass full height ends
- ◆ **Security Kit** – Locking rear doors & front glass
- ◆ **Casters** - Easy cleaning, semi-mobile placement, and delivery. Only available at time of order. Add 1/2" to height.
- ◆ **FREE Slim-Sides** - 3/4" thick end panel (reduces overall length by 1 1/2")
- ◆ **Product ID Kit** - Sign holders, (4) Clear full shelf 1 1/4" H. ticket strips & (6) floor easel clips
- ◆ **Extra Shelf** – Upgrade to 4 tiers of display! (2) Glass shelves with lighting
- ◆ **FREE Shelving Option** - Wire or Stainless steel
- ◆ **Hardware Colors** - Powder-coated front hinge, shelf supports & lighting valance
- ◆ **Custom Sizes** - Available in custom depth and height
- ◆ **Remote Refrigeration** - Excludes refrigeration system

### TECH SPECS

- ◆ **Laboratory Tested** – Every MILLROCK undergoes a 24 hour endurance test with 181 point quality control inspection before shipment
- ◆ **Operating Temp.** Refrigerated side is factory calibrated to 38° F.
- ◆ **8' long cord with plug**
- ◆ **Millrock Cases** are designed to operate under normal store conditions less than 75° F (24° C) with less than 50% Relative Humidity
- ◆ **Hot gas evaporator pan**
- ◆ **Refrigerant** is environmentally friendly R22
- ◆ **Meets All Electrical & Sanitation Requirements** for USA & Canada including CSA, ETL, NSF, UL, & CRMA. Certified by ETL.
- ◆ **Warranty** – 1 year parts and labor / 5 years compressor
- ◆ **R96** has 2 separate curved front glass pieces all others are 1 piece

MODEL	DIMENSIONS (INCHES) length - depth - height	ELECTRICAL volts/phase/hertz - amps.	COMPRESSOR (hp)	SHIPPING WEIGHT / VOLUME lbs. / cu. ft.
R38	38 - 32½ - 53	120/1/60 - 9.3	1/3	425 / 55.0
R50	50 - 32½ - 53	120/1/60 - 9.3	1/3	485 / 68.7
R62	62 - 32½ - 53	120/1/60 - 9.6	1/3	585 / 83.7
R74	74 - 32½ - 53	120/1/60 - 12.8	1/2	685 / 102.5
R96	96 - 32½ - 53	120/1/60 - 12.8	1/2	810 / 129

405 West Street ■ West Bridgewater, MA 02379 ■ p:800.645.7625 ■ f:617.687.7700  
 e:sales@millrock.com ■ www.millrock.com ■ www.GrowYourBrand.com

© 2000 - 2005 Modular Brand Group, LLC All Rights Reserved. Millrock is a division of Modular Brand Group, LLC

Continual product improvement may necessitate changes in specifications without notice

Rev.082105