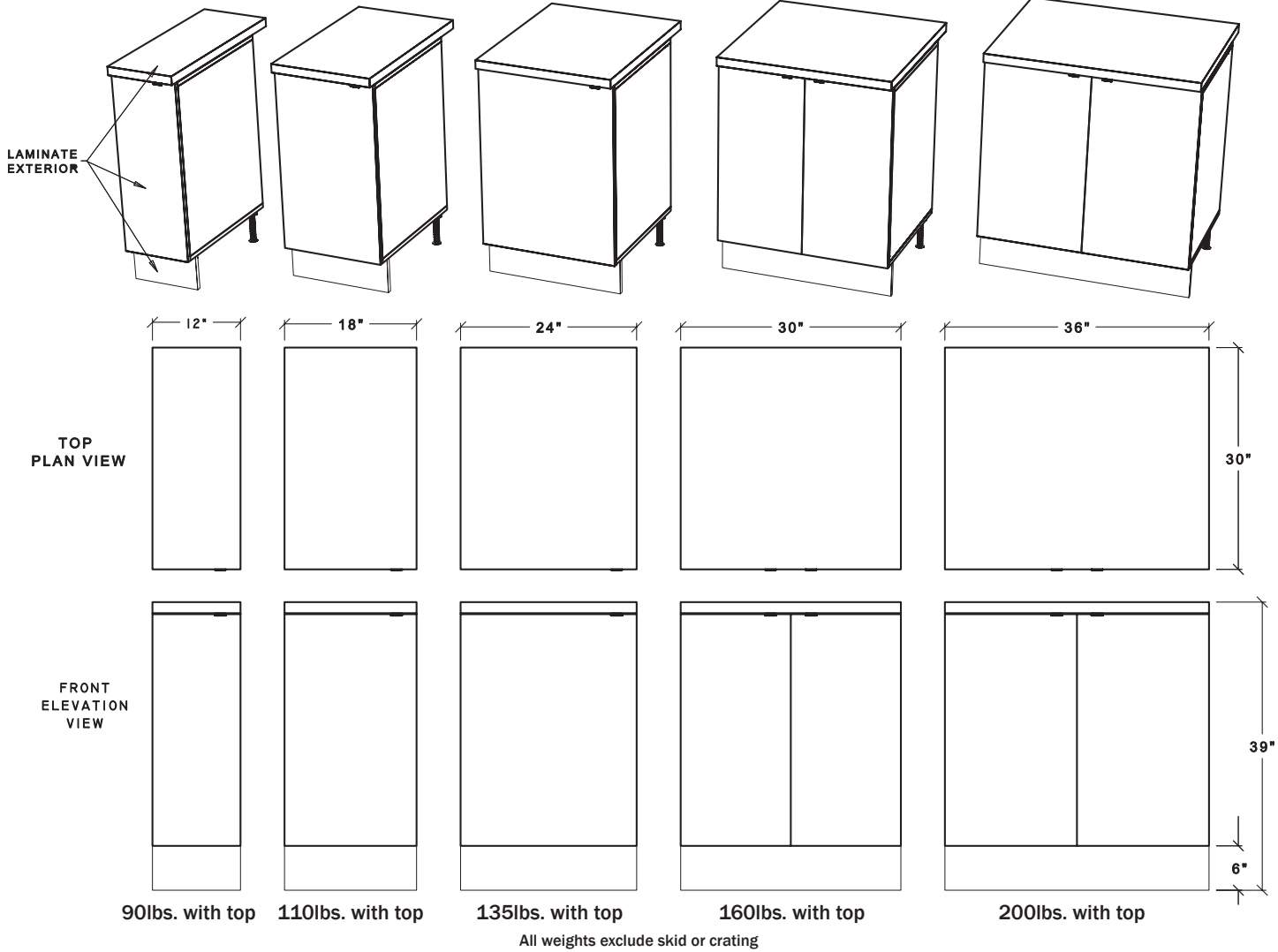


**MSM12 MSM18 MSM24 MSM30 MSM36**

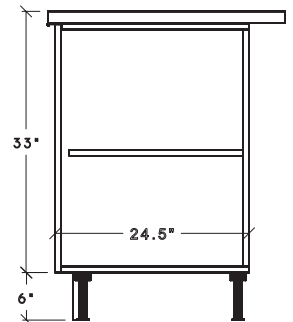


**FEATURES**

- ◆ Use on front or rear service line to create valuable storage and countertop utility space.
- ◆ Plastic laminate door (2 doors each on cabinets over 24" wide).
- ◆ Black melamine interior
- ◆ Includes one adjustable shelf
- ◆ Reversible door swing
- ◆ Countertop with plastic laminate of your choice
- ◆ Integrated waterproof metal legs are fully adjustable
- ◆ Removable toekick is marine grade plywood with black laminate finish.

**Options:**

- ◆ Integrally welded 16 gauge 304 series stainless steel Spill-proof™ counters.
- ◆ Stainless steel modular base cabinet construction.
- ◆ Made-to-order cutouts in countertops for your drop-in equipment.



405 West Street ▪ W. Bridgewater, MA 02379 ▪ p:800.645.7625 ▪ f:617.687.7700  
e:sales@millrock.com ▪ www.millrock.com